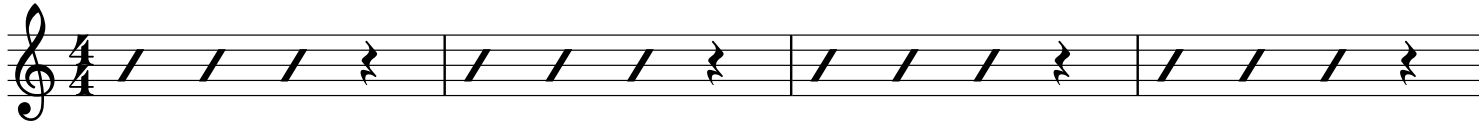


Ana Esmi Habibak

Ragheb Alama

Melody

D_{M1} C B^b C D_{M1} C G_{M1} A



D_{M1} C B^b C D_{M1} C G_{M1} A



Chorus riff

D_{M1} C/G D_{M1} C/G D_{M1} C/G B^b C



D_{M1} C/G D_{M1} C/G D_{M1} C/G B^b C

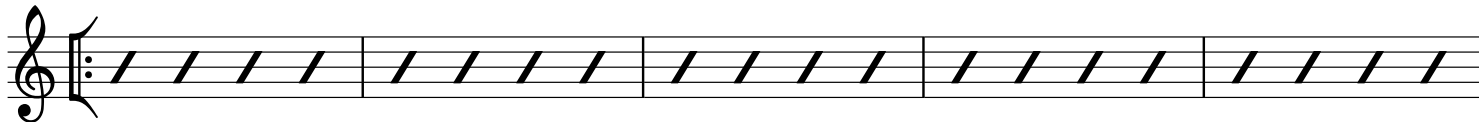


D_{M1} C/G D_{M1} C/G D_{M1} C/G B^b C

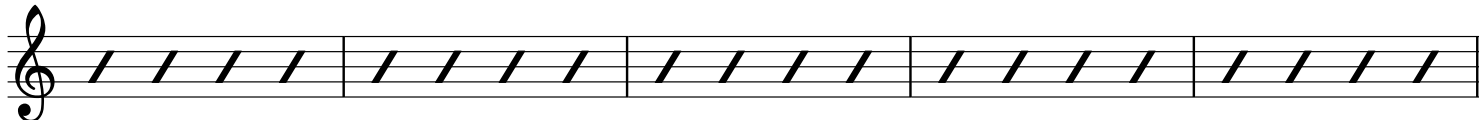


Verse

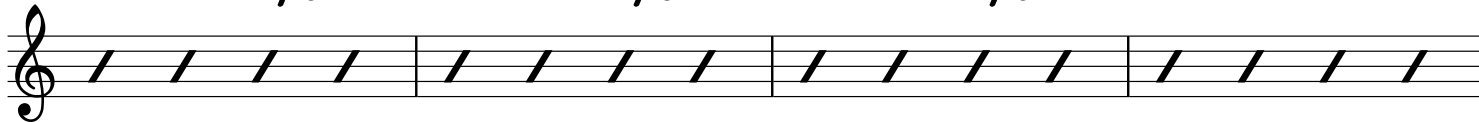
D_{M1} G_{M1} C F A⁷



D_{M1} G_{M1} C F A⁷



D_{M1} C/G D_{M1} C/G D_{M1} C/G B^b C



D_{M1} C/G D_{M1} C/G D_{M1} C/G B^b C

Post *D_{M1} 2nd time 4 bars percussion only + 4 bars with original melody*

D_{M1} C/G D_{M1} C/G D_{M1} C/G B^b C

Chorus *D_{M1} C/G D_{M1} C/G D_{M1} C/G B^b C*

D_{M1} C/G D_{M1} C/G D_{M1} C/G B^b C Play 3x