

Bazam Delam Gerefte

Vrouwen Toonsoort

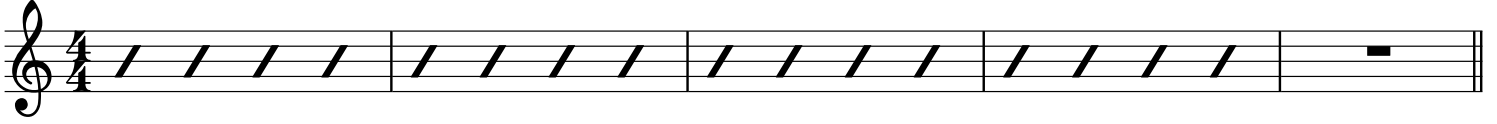
Intro

D_{M1}

B^b

D_{M1}

B^b



Thema

G_{M1}

D_{M1}⁷

C_{M1}

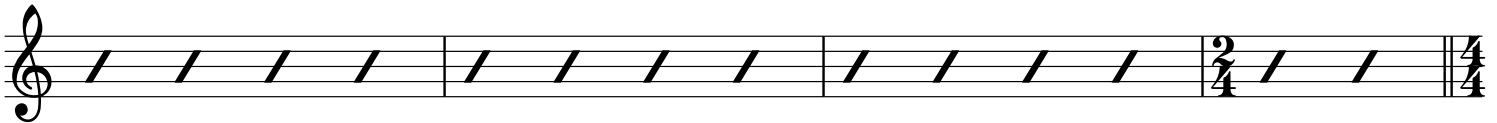
D_{M1}



G_{M1}

D_{M1}⁷

C_{M1}



Intro

D_{M1}

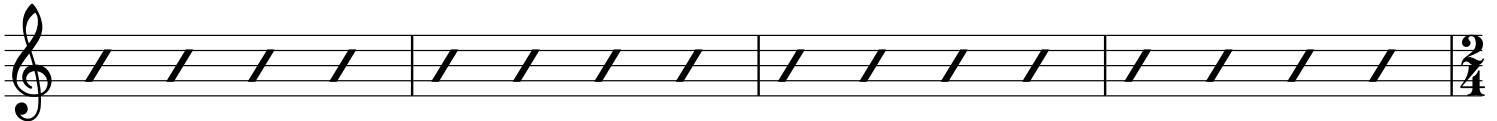


Couplet

G_{M1}

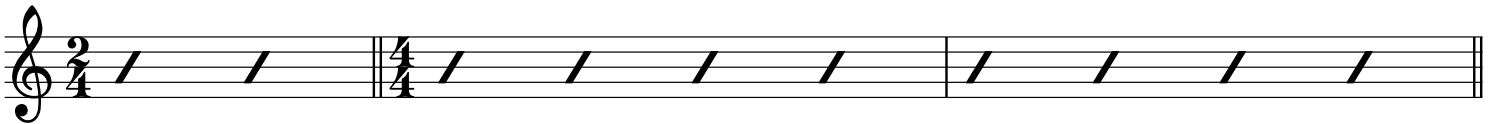
D_{M1}

E^b



C_{M1}

D_{M1}



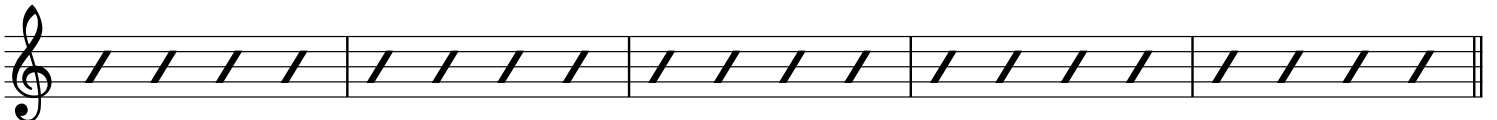
G_{M1}

D_{M1}

E^b

C_{M1}

D_{M1}⁷



Refrein

♩

D_{M1}

G_{M1}

D_{M1}

G_{M1}

C_{M1}

D_{M1}



D_{M1} G_{M1} D_{M1} G_{M1} C_{M1} D_{M1}

Thema G_{M1} D_{M1}⁷ C_{M1} D_{M1}

G_{M1} D_{M1}⁷ C_{M1}

Variatie D_{M1} To Coda

Intermezzo D_{M1} C_{M1} D_{M1} D_{M1} C_{M1} D_{M1}

G_{M1} F G_{M1} F G_{M1} D.S. al Coda

Coda G_{M1} C_{M1} F C_{M1} G_{M1}

G_{M1} C_{M1} F C_{M1} G_{M1} **Refrein** **Einde**