

Paez (Emi)

Kourosh Yaghmaei

Intro

B_{sus}⁴

B

B_{sus}⁴

B



M.1

E_m

D

C

B_{sus}⁴

B



E_m

D

C

B_{sus}⁴

B

B_{sus}⁴

B



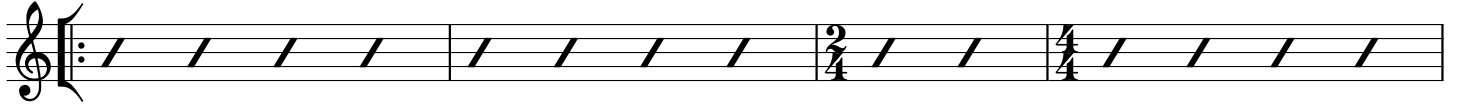
A

E_m

D

A_m

E_m



E_m

D

A_m

E_m



B

A_m

E_m

F

E_m



A_m

E_m

F

E_m



C

G

D

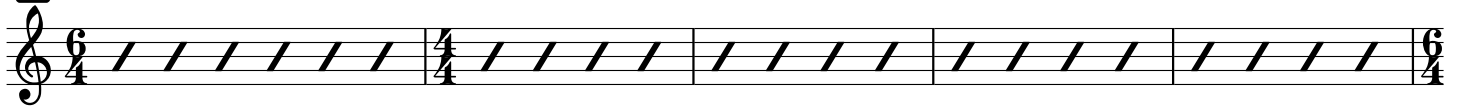
E_m

B_m

C

D

G



G

D

E_m

B_m

C

D

G

B⁷



M.1

E_{M1} 2nd time = SOLO

D

C

B_{sus}⁴

B



E_{M1}

D

C

B_{sus}⁴

B



E_{M1}

D

C

B_{sus}⁴

B



E_{M1}

D

C

B_{sus}⁴

B

E_{M1}

